

TEST REPORT

1. Applicant

* Client Name :
* Address : 235-48 GWANGJEOK-RO GWANGJEOK-MYEON YANGJU-SI GYENGGI-DO 482-84
* Date of Receipt : 230608

2. Purpose of Report :

3. Number of Report : 230607

4. Test Standard / Item : / 230607 MSP1 30K 38도

5. Test Period : 230607 ~ 230608

6. Test Environment

* Ambient Temp. : 22.0 +- 3 °C
* Relative Humidity : 60.0 +- 10 % RH

7. Test Item

* Name of Product :
* Rating :
* Model :

8. Test Result : Refer to the attachment

Confirmation	Test by		Technical manager	
	PKW	Sign	PKW	Sign

- * The result shown in this test report refer only to the sample(s) tested unless otherwise stated.
- * This report cannot be reporduced, except in full.
- * This report is for reference only. It cannot replace the report by standard organization(s).

Result

Report Number	Sample Name	Sample Number	Test Standard
230607			

Test Item	Unit	Result	Notice
Beam Distribution Test		See Attachement	
ATHD	%	0.0	
CIE 1931 Cx, Cy		0.4330 , 0.4058	
Correlated Color Temperature	K	3082	
Ra		92.21	
Power Factor		1.000	
Input Voltage	V	23.989	
Input Current	A	0.047	
Input Watt	W	1.1165	
Lamp Flux	lm	72.9	
Efficient	lm/W	65.30	
luminous Intensity (Max , Center)	cd	154 , 153	
Illuminance	lx	153	1 m
		38	2 m
		17	3 m

* This test result is for the sample provided by the client.

* Sample photo

Click to load image

Luminaire KH FEELUX

Lamp

Report

230607

No. of lamps 1

Voltage (V) 23.989

Filename 230607 MSP1 30K 38도.jdt

Lamp flux (lm) 73

Current (A) 0.04654

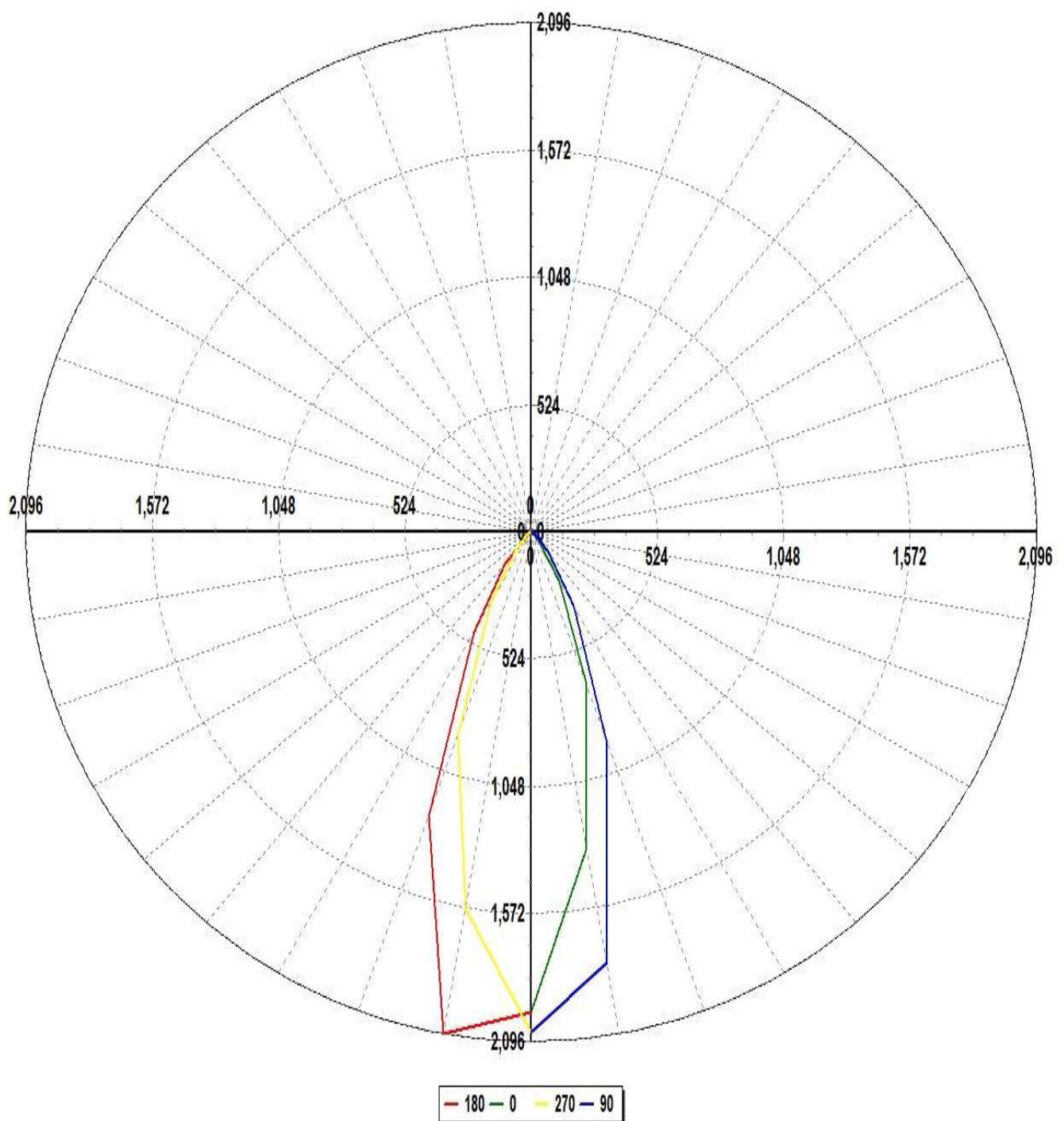
Operator

Total flux (lm) 73

Power Factor 1

Date 2023-06-07 오후 3:58:19

Luminous Intensity Distribution



Luminaire KH FEELUX

Lamp

Report

230607

No. of lamps

1

Voltage (V)

23.989

Filename 230607 MSP1 30K 38도.jdt

Lamp flux (lm)

73

Current (A)

0.04654

Operator

Total flux (lm)

73

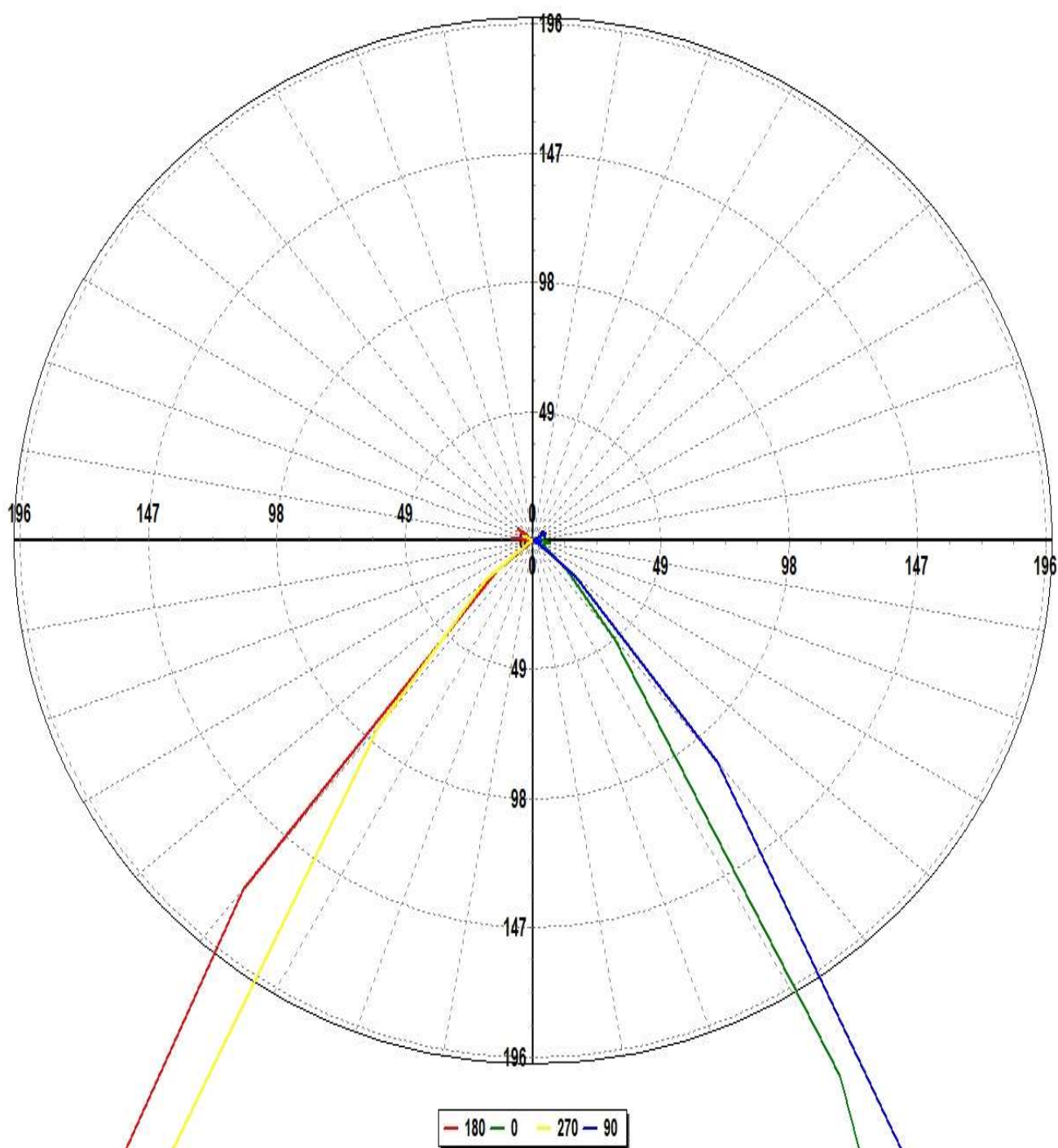
Power Factor

1

Date

2023-06-07 오후 3:58:19

Luminous Intensity Distribution (Lowest 10%)



Total Optical Solution Provider

Luminaire KH FEELUX

Lamp

Report

230607

No. of lamps 1

Voltage (V) 23.989

Filename 230607 MSP1 30K 38도.jdt

Lamp flux (lm) 73

Current (A) 0.04654

Operator

Total flux (lm) 73

Power Factor 1

Date 2023-06-07 오후 3:58:19

Luminous Intensity Data

Maximum (cd) : 154

Minimum (cd) : -1

G/C	0	30	60	90	120	150	180	210	240	270	300
0	144.08	146.05	147.47	149.99	151.73	153.77	144.08	146.05	147.47	149.99	151.73
10	96.53	103.75	117.85	131.46	143.8	146.54	152.91	141.01	125.88	114.61	105.36
20	48.86	51.74	58.89	67.47	76.81	77.12	90.72	83.82	72.01	64.96	58.44
30	17.12	18.17	21.53	25.86	29.72	29.82	34.8	32.31	26.68	24.02	21.82
40	3.53	4.39	5.91	8	10.1	9.59	12.57	10.6	8.7	6.67	5.1
50	1.21	1.43	0.07	1.56	1.13	1.1	1.3	1.65	2.28	1.72	1.19
60	0.49	0.22	0.09	0.24	0.05	-0.05	-0.08	-0.41	0.09	0.16	-0.16
70	0.29	-0.21	-1.02	-0.36	0.1	0.16	0.11	0.05	0.1	0.01	-0.05
80	0.49	0.46	-0.26	0.25	0.39	0.06	-0.87	0.18	0.4	0.03	0.44
90	0.31	0.14	0.05	-0.07	0.05	-0.07	-0.11	-0.14	-0.59	-0.34	-0.52
100	0.05	-0.73	-0.16	0.09	-0.19	-0.13	0.62	-0.29	-0.08	0.09	-0.09
110	0.1	0.47	0.21	-0.21	1.01	0.02	-0.06	0.1	-0.44	-0.03	0.65
120	-0.38	-0.14	0.99	0.43	-0.05	-0.34	-0.62	-0.21	0.47	0.3	0.16
130	0.08	0.63	0.53	-0.06	0.13	-0.45	0.56	-0.6	0.53	-0.27	0.28

Luminaire KH FEELUX

Lamp

Report

230607

No. of lamps 1

Voltage (V) 23.989

Filename 230607 MSP1 30K 38도.jdt

Lamp flux (lm) 73

Current (A) 0.04654

Operator

Total flux (lm) 73

Power Factor 1

Date 2023-06-07 오후 3:58:19

Luminous Intensity Data (Continued)

Maximum (cd) : 154

Minimum (cd) : -1

G/C	330	360
0	153.77	144.08
10	103.18	96.53
20	58.77	48.86
30	22.2	17.12
40	5.15	3.53
50	1.02	1.21
60	-0.23	0.49
70	-0.32	0.29
80	0.21	0.49
90	-0.17	0.31
100	0.81	0.05
110	0.43	0.1
120	0.04	-0.38
130	-0.07	0.08

Luminaire KH FEELUX

Lamp

Report

230607

No. of lamps 1

Voltage (V) 23.989

Filename 230607 MSP1 30K 38도.jdt

Lamp flux (lm) 73

Current (A) 0.04654

Operator

Total flux (lm) 73

Power Factor 1

Date 2023-06-07 오후 3:58:19

Luminous Flux Table

Total Lamp Lumens: 72.853

Luminaire Efficiency (lm/W): 65.25

CIE Classification: Direct

Elevation	Lumens	Cumulative	Lamp %	Luminaire %
0	3.56	3.56	4.88	4.88
10	23.50	27.06	37.12	37.14
20	25.27	52.33	71.79	71.83
30	13.88	66.21	90.82	90.88
40	5.30	71.51	98.09	98.15
50	1.09	72.60	99.59	99.66
60	0.03	72.64	99.64	99.70
70	-0.10	72.53	99.50	99.56
80	0.16	72.69	99.72	99.78
90	-0.13	72.56	99.53	99.60
100	0.00	72.56	99.53	99.60
110	0.19	72.75	99.80	99.86
120	0.05	72.81	99.87	99.94
130	0.05	72.85	99.94	100.00

Luminaire KH FEELUX

Lamp

Report

230607

No. of lamps 1

Voltage (V) 23.989

Filename 230607 MSP1 30K 38도.jdt

Lamp flux (lm) 73

Current (A) 0.04654

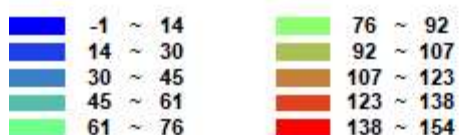
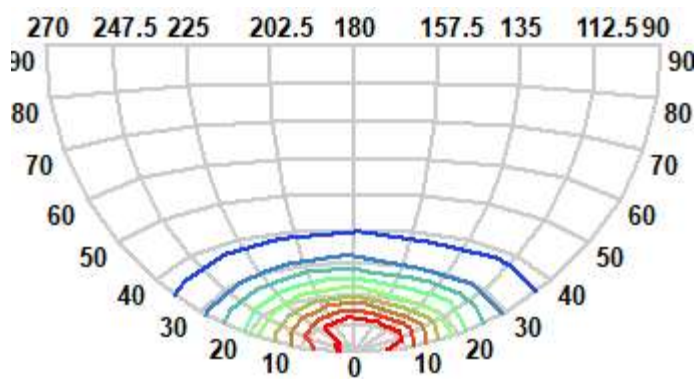
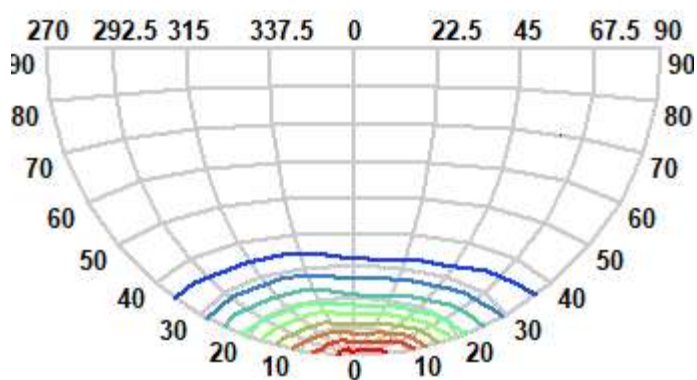
Operator

Total flux (lm) 73

Power Factor 1

Date 2023-06-07 오후 3:58:19

IsoCandela (Type C)



Luminaire KH FEELUX

Lamp

Report

230607

No. of lamps 1

Voltage (V) 23.989

Filename 230607 MSP1 30K 38도.jdt

Lamp flux (lm) 73

Current (A) 0.04654

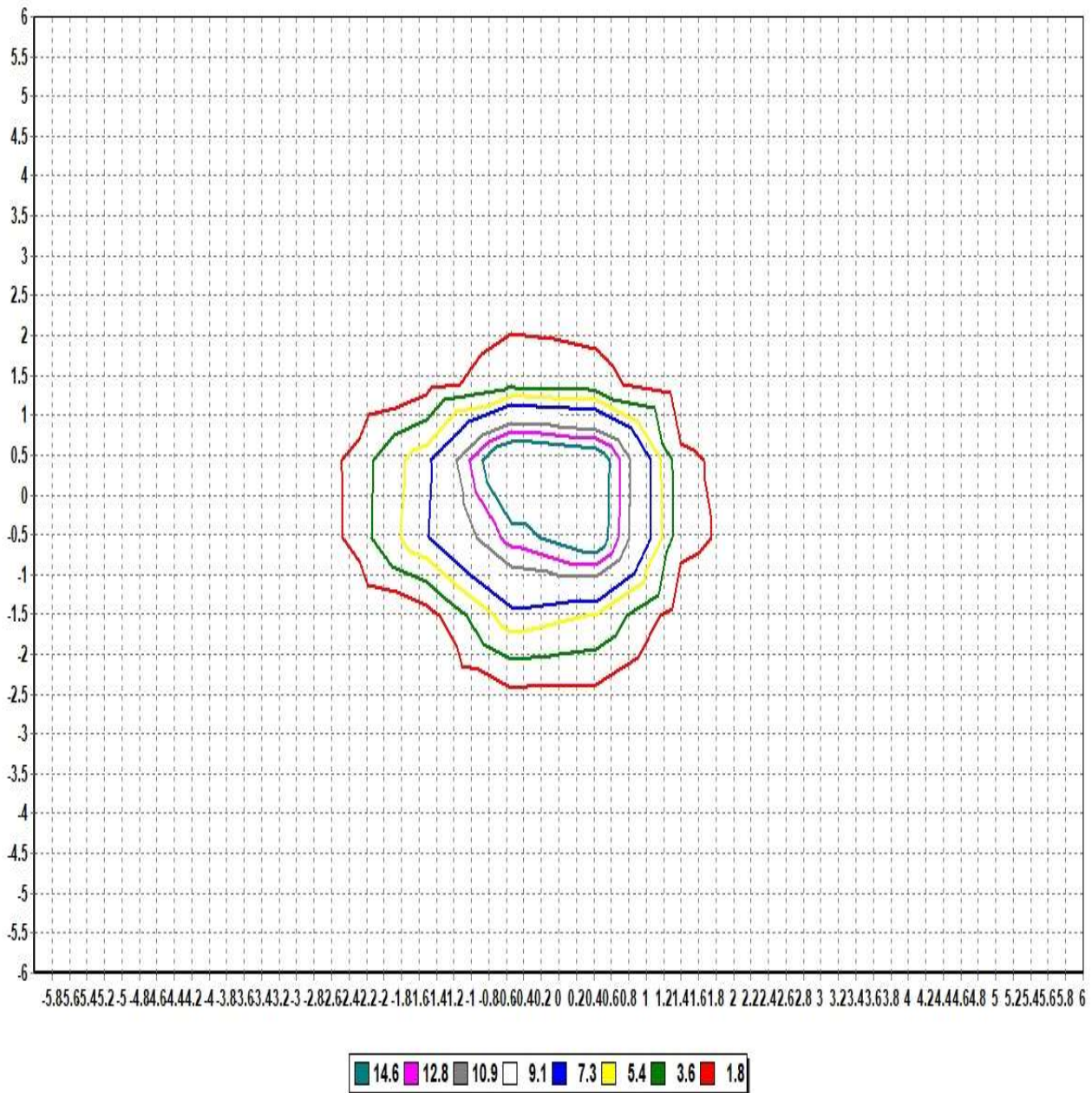
Operator

Total flux (lm) 73

Power Factor 1

Date 2023-06-07 오후 3:58:19

IsoLux Diagram (Ground)



Pole Height (m): 2.7

Area Width (m): 12

Total Optical Solution Provider

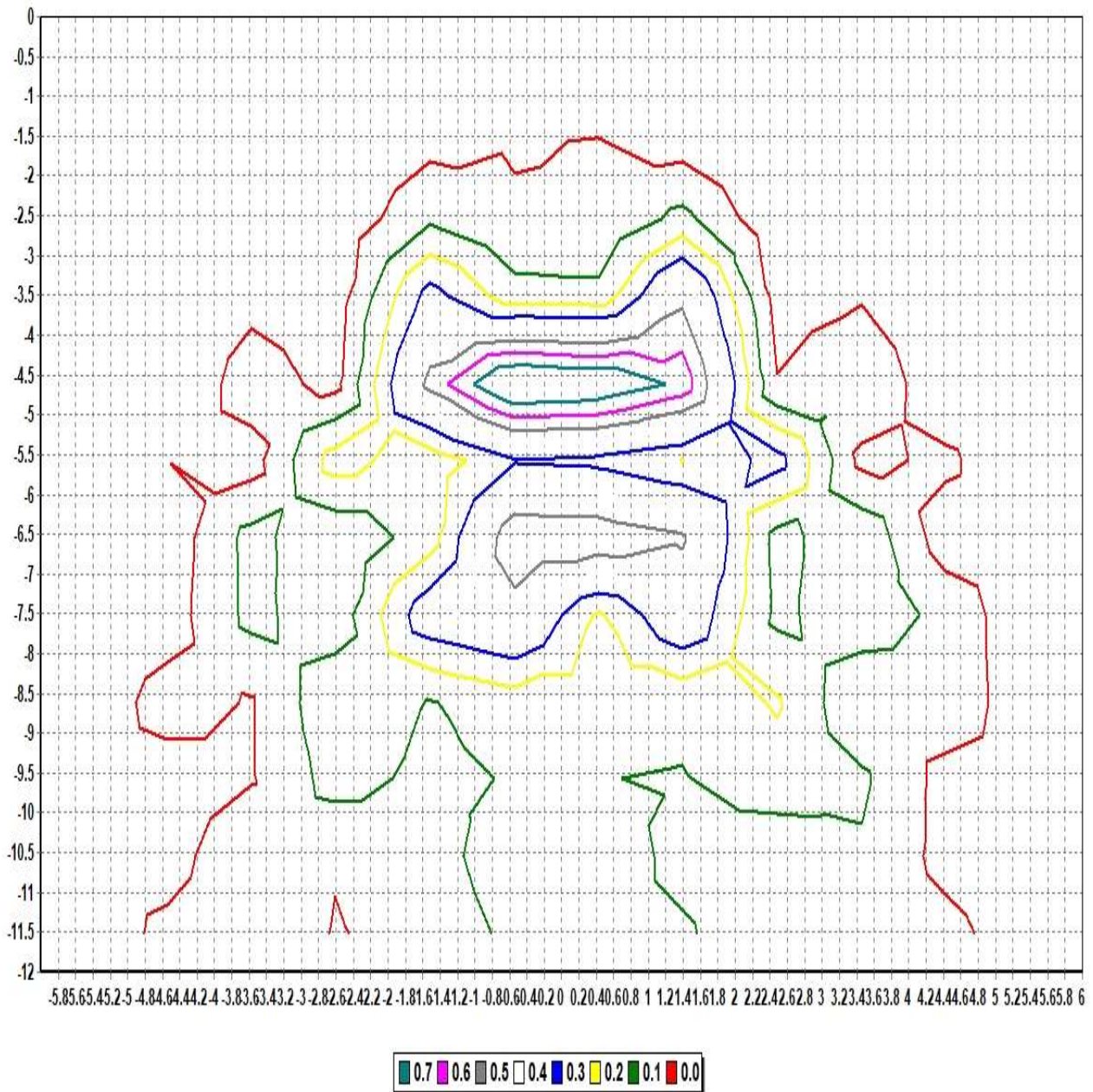
Luminaire KH FEELUX

Lamp

No. of lamps	1	Voltage (V)	23.989
Lamp flux (lm)	73	Current (A)	0.04654
Total flux (lm)	73	Power Factor	1

Report	230607
Filename	230607 MSP1 30K 38도.jdt
Operator	
Date	2023-06-07 오후 3:58:19

IsoLux Diagram (Wall)



Pole Height (m):	2.7	Wall Distance (m):	2.7
Aiming Plane:	0	Wall Height (m):	12
Total Optical Solution Provider			

Luminaire KH FEELUX

Lamp

No. of lamps	1	Voltage (V)	23.989
Lamp flux (lm)	73	Current (A)	0.04654
Total flux (lm)	73	Power Factor	1

Report 230607

Filename 230607 MSP1 30K 38도.jdt

Operator

Date 2023-06-07 오후 3:58:19

Illuminance Levels (Ground)

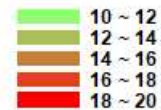
6.00	0.00	0.00	0.00	0.00	0.00	0.00	0.00	0.00	0.00	0.00	-0.01	0.00	0.00
5.00	0.00	0.00	0.00	0.00	0.01	0.01	0.02	0.01	0.01	0.00	0.00	0.00	0.00
4.00	0.00	0.00	0.01	0.02	0.00	0.01	0.02	0.01	0.01	0.01	0.01	0.00	0.00
3.00	0.00	0.00	0.01	0.01	0.18	0.06	0.12	0.04	0.12	0.01	0.02	0.00	0.00
2.00	0.00	0.01	0.00	0.21	0.19	0.66	1.01	0.32	0.10	0.08	0.01	0.01	0.00
1.00	0.00	0.01	0.01	0.06	0.68	3.65	14.64	2.42	0.30	0.06	0.01	0.01	0.00
0.00	0.00	0.02	0.01	0.15	1.44	17.07	19.76	10.74	0.59	0.07	0.02	0.02	0.00
-1.00	0.00	0.01	0.01	0.08	0.73	4.41	12.78	3.06	0.36	0.05	0.01	0.01	0.00
-2.00	0.00	0.01	0.00	0.26	0.23	0.70	0.90	0.37	0.14	0.11	0.00	0.01	0.00
-3.00	0.00	0.00	0.02	0.00	0.20	0.09	0.11	0.06	0.15	0.01	0.01	0.00	0.00
-4.00	0.00	0.00	0.01	0.03	0.00	0.02	0.02	0.02	0.00	0.02	0.01	0.00	0.00
-5.00	0.00	0.00	0.00	0.00	0.01	0.02	0.02	0.02	0.01	0.00	0.00	0.00	0.00
-6.00	0.00	0.00	0.00	0.00	0.00	0.00	0.00	0.00	0.00	0.00	0.00	0.00	0.00
-6.00	-5.00	-4.00	-3.00	-2.00	-1.00	0.00	1.00	2.00	3.00	4.00	5.00	6.00	

Illum. (Max.) : 19.764

Illum. (Min.) : -0.0051

Illum. (Avg.) : 0.5924

All illuminance level values are in lux.



Luminaire KH FEELUX

Lamp

Report

230607

No. of lamps 1

Voltage (V) 23.989

Filename 230607 MSP1 30K 38도.jdt

Lamp flux (lm) 73

Current (A) 0.04654

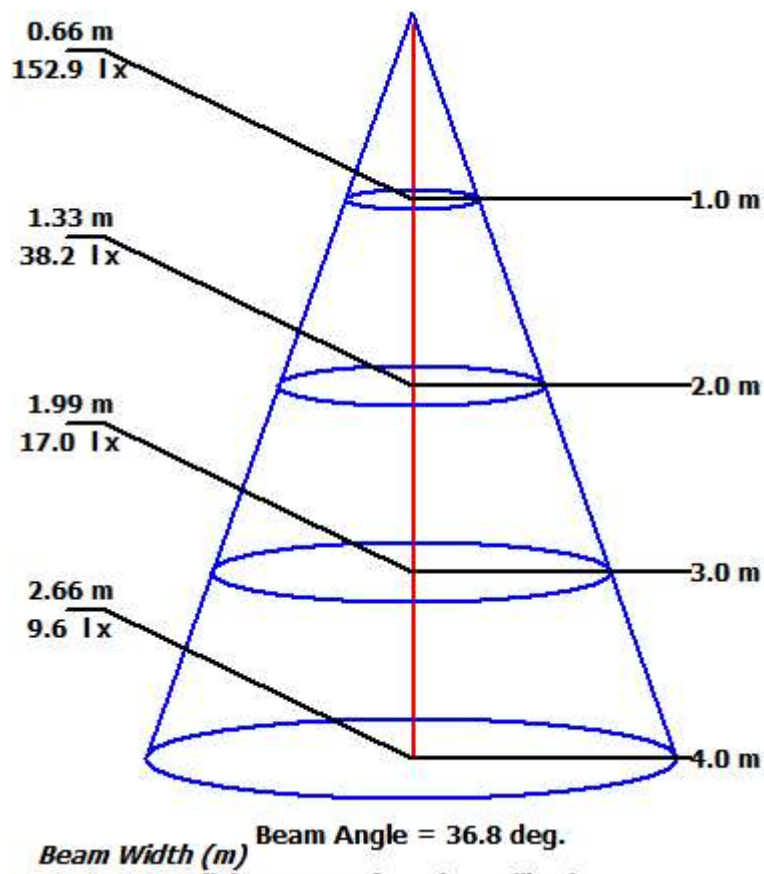
Operator

Total flux (lm) 73

Power Factor 1

Date 2023-06-07 오후 3:58:19

Illuminance Cone Diagram



Luminaire KH FEELUX

Lamp

Report 230607

No. of lamps 1 Voltage (V) 23.989

Filename 230607 MSP1 30K 38도.jdt

Lamp flux (lm) 73 Current (A) 0.04654

Operator

Total flux (lm) 73 Power Factor 1

Date 2023-06-07 오후 3:58:19

Coefficient of Utilization

	Refl. Ceiling (%)	80%	80%	80%	70%	70%	70%	50%	50%	50%	30%	30%	30%	10%	10%	10%	0%
	Refl. Wall (%)	50%	30%	10%	50%	30%	10%	50%	30%	10%	50%	30%	10%	50%	30%	10%	0%
Eff. Floor Cavity	Refl.	20%	20%	20%	20%	20%	20%	20%	20%	20%	20%	20%	20%	20%	20%	20%	20%
Room CR	0	0.00	0.00	0.00	0.00	0.00	0.00	0.00	0.00	0.00	0.00	0.00	0.00	0.00	0.00	0.00	0.00
Room CR	1	0.00	0.00	0.00	0.00	0.00	0.00	0.00	0.00	0.00	0.00	0.00	0.00	0.00	0.00	0.00	0.00
Room CR	2	0.00	0.00	0.00	0.00	0.00	0.00	0.00	0.00	0.00	0.00	0.00	0.00	0.00	0.00	0.00	0.00
Room CR	3	0.00	0.00	0.00	0.00	0.00	0.00	0.00	0.00	0.00	0.00	0.00	0.00	0.00	0.00	0.00	0.00
Room CR	4	0.00	0.00	0.00	0.00	0.00	0.00	0.00	0.00	0.00	0.00	0.00	0.00	0.00	0.00	0.00	0.00
Room CR	5	0.00	0.00	0.00	0.00	0.00	0.00	0.00	0.00	0.00	0.00	0.00	0.00	0.00	0.00	0.00	0.00
Room CR	6	0.00	0.00	0.00	0.00	0.00	0.00	0.00	0.00	0.00	0.00	0.00	0.00	0.00	0.00	0.00	0.00
Room CR	7	0.00	0.00	0.00	0.00	0.00	0.00	0.00	0.00	0.00	0.00	0.00	0.00	0.00	0.00	0.00	0.00
Room CR	8	0.00	0.00	0.00	0.00	0.00	0.00	0.00	0.00	0.00	0.00	0.00	0.00	0.00	0.00	0.00	0.00
Room CR	9	0.00	0.00	0.00	0.00	0.00	0.00	0.00	0.00	0.00	0.00	0.00	0.00	0.00	0.00	0.00	0.00
Room CR	10	0.00	0.00	0.00	0.00	0.00	0.00	0.00	0.00	0.00	0.00	0.00	0.00	0.00	0.00	0.00	0.00