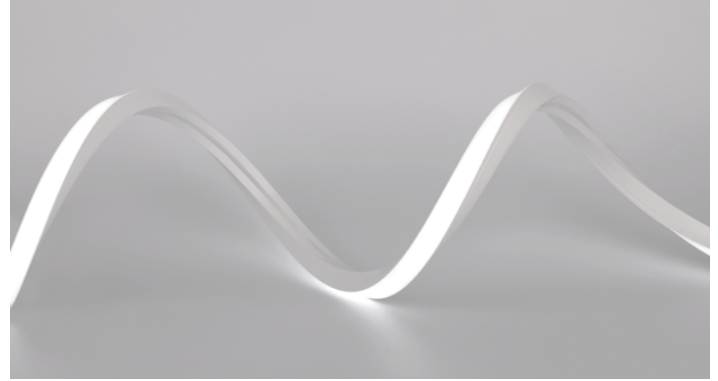
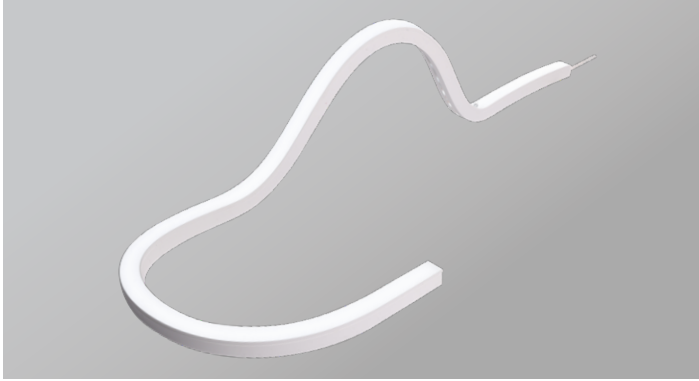


DATE PROJECT LOCATION TYPE



PRODUCT FEATURES

- Seamless Diode Free Illumination
- UV-resistant Silicon material
- Dual Bend
- Interior & Exterior Applications
- Field Cut 20.83mm (0.82")
- Available in standard lengths of 1, 2, 3, 4, 5M reels
- Straight, Side, Bottom Feed Options

PRODUCT SPECIFICATIONS

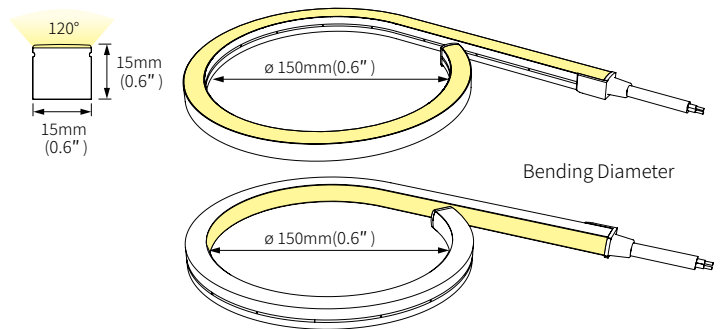
Lamp Power	14.4W/M (4.39W/ft)
Power Input	24V DC Constant Voltage
Color Rendering Index	CRI >90
Available CCTs	2200K, 2400K, 2700K, 3000K, 3500K, 4000K
Operating Temperature Ranges	-4°F to 122°F (-20°C to 50°C)
Control	0-10V, Forward Phase, DALI, DMX, Zigbee
Material	Silicone
Beam Angle	120°
Maximum Length	5,000mm (16.4')
Minimum Length	20.83mm (0.82"), 41.6mm(1.63") for Dual
Bend Diameter	150mm (5.9")
Lamp life	50,000hr / 70%
Warranty	5 year Warranty
IP Rate	IP67 with Factory Termination
	IP65 with Field Termination



SPECIFICATIONS TABLE

Model Number	Color Temperature	Lamp Power	Luminous Flux	Lumen/W
FN3D 22K-24V-C90	2200K	14.4 W/m (4.39 W/ft)	285 lm/ft	65 lm/W
FN3D 24K-24V-C90	2400K		285 lm/ft	65 lm/W
FN3D 27K-24V-C90	2700K		285 lm/ft	65 lm/W
FN3D 30K-24V-C90	3000K		285 lm/ft	65 lm/W
FN3D 35K-24V-C90	3500K		305 lm/ft	70 lm/W
FN3D 40K-24V-C90	4000K		305 lm/ft	70 lm/W
FN3D SC-24V-90	2200~4000K		305 lm/ft	70 lm/W

PHYSICAL SPECIFICATIONS



SPECIFICATION GUIDE

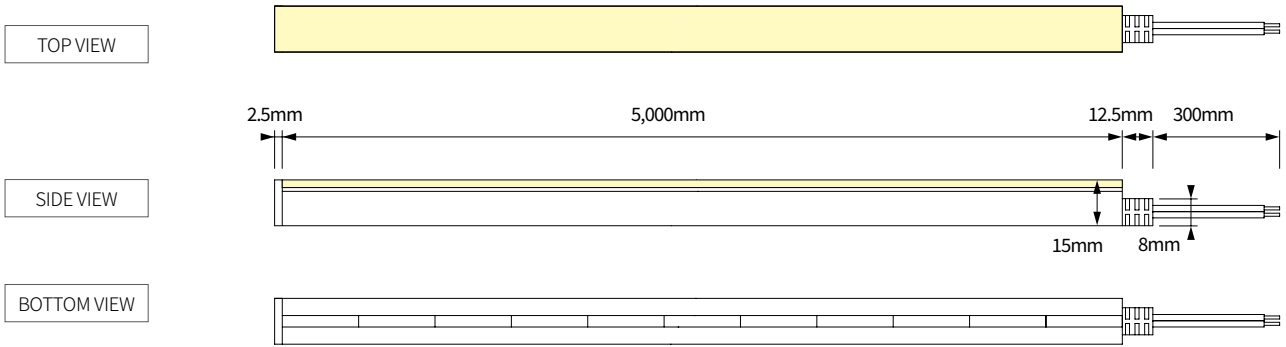
NOT TO BE USED FOR ORDERING. The Specification Guide is intended solely to ensure that all options are considered.

MODEL	COLOR	FEED TYPE	MOUNTING	EXTRUSION	DRIVER	CONTROLS	VOLTAGE
FN 3D	22K-2200K* 24K-2400K* 27K-2700K 30K-3000K 35K-3500K 40K-4000K R - Red* G - Green* B - Blue* SC - 2200K-4000K	C90 STD - Straight Feed LS - Left Side Feed BS - Bottom Feed*	STD - Flat Brackets BK2 - Angle Brackets	EXL-3.3' Extrusion EXL-FLEX-3.3' Flexible Extrusion	CP - Cable/Plug HW - Hard Wire TD - 3rd Party Drivers Consult Factory	NDM - Non-Dim 0-10V FPH - Forward Phase DALI - DALI Interface DMX - DMX Interface	120V 230V 277V

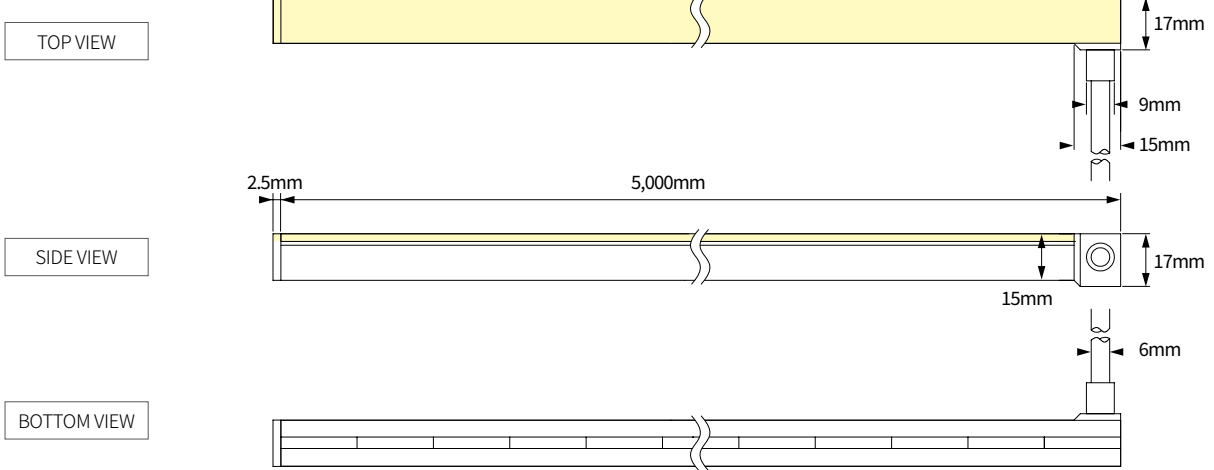
* Available, As Special Order Consult Feelux Lighting

DIMENSIONS

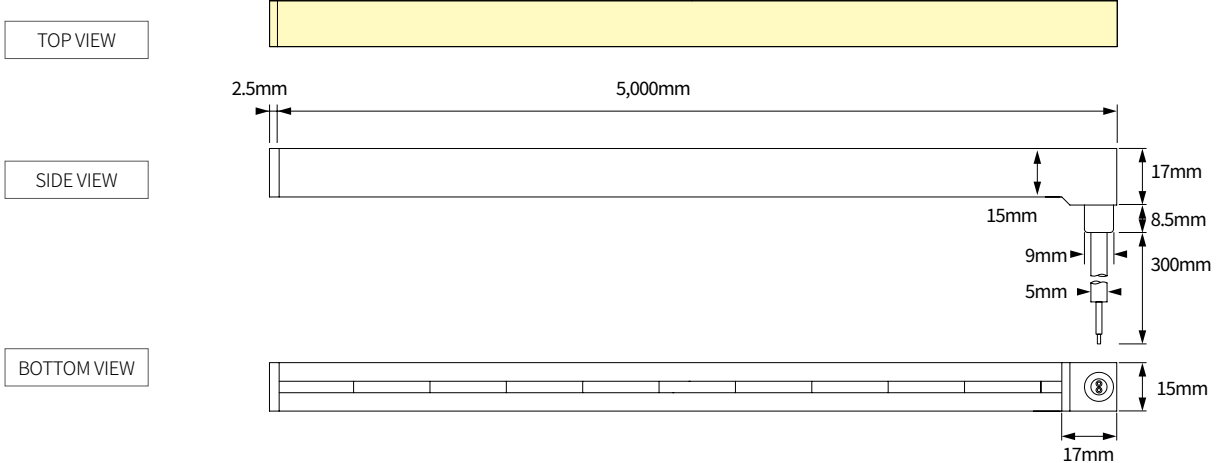
* Straight Feed



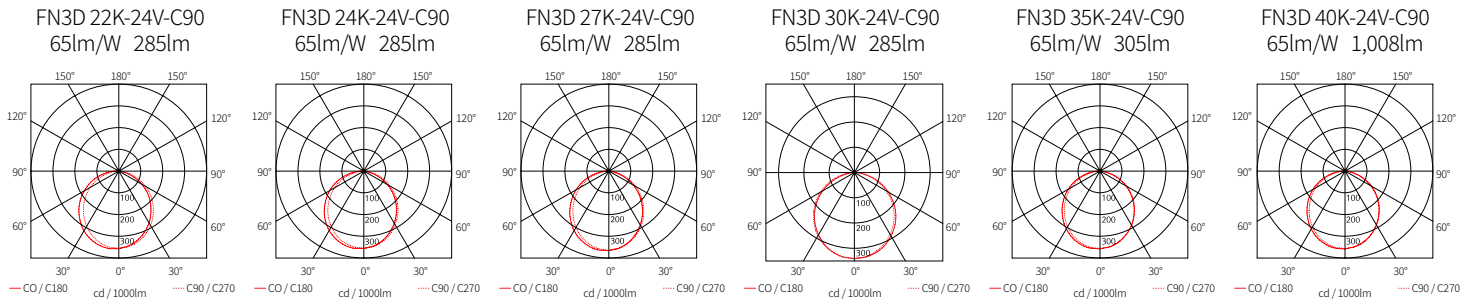
* Left Side Feed



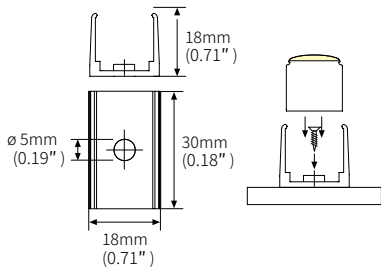
* Bottom feed



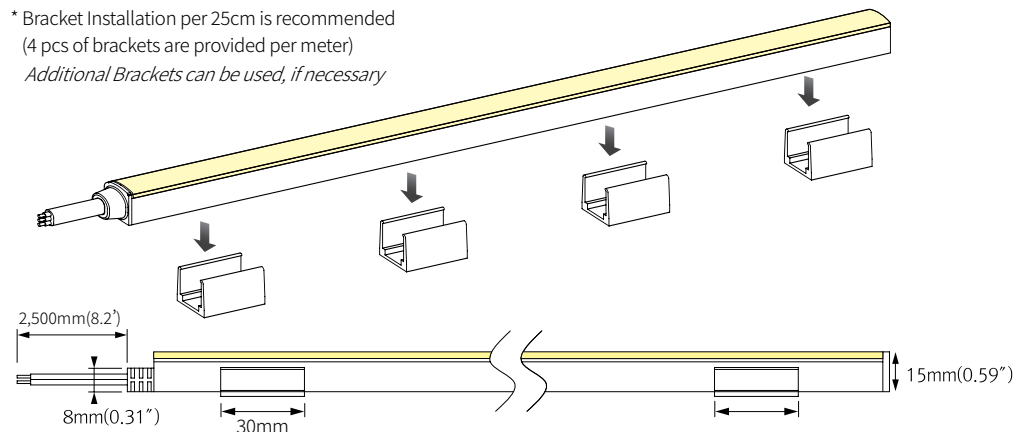
BEAM SPREADS



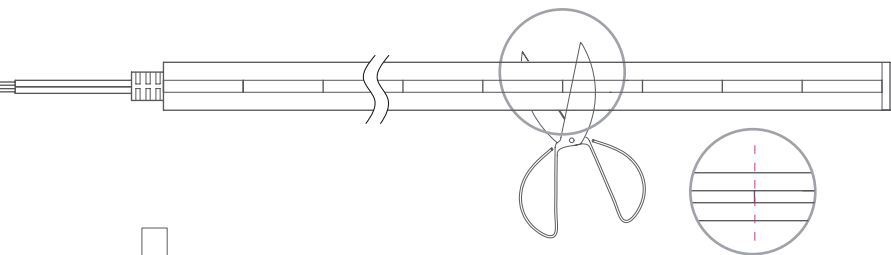
INSTALLATION



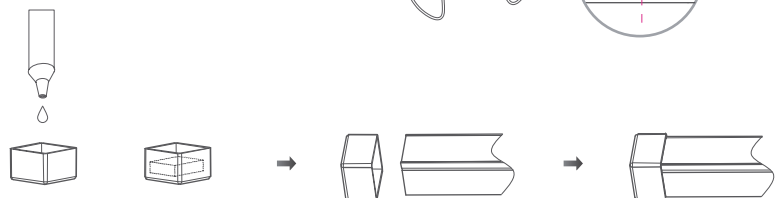
* Bracket Installation per 25cm is recommended
(4 pcs of brackets are provided per meter)
Additional Brackets can be used, if necessary



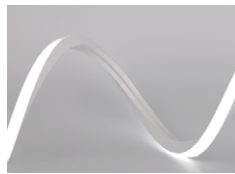
① Cutting Point: Every 20.83mm (0.82")



② Use Silicon Glue to Attach the End Cap



COMPONENTS



FLXible Neon 3D-Straight Feed

- __FN3D (color)K-24V-C90-5M(16.4')
- __FN3D (color)K-24V-C90-4M(13.1')
- __FN3D (color)K-24V-C90-3M(9.8')
- __FN3D (color)K-24V-C90-2M(6.6')
- __FN3D (color)K-24V-C90-1M(3.3')



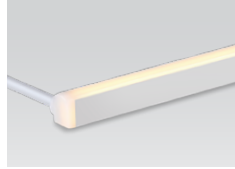
Dimming Interface (0-10V)

- __FDC-L10 *
- Max. 100W (100W/CH, 1CH)



12 Port Hub

- __D12P-HUB
- Included with Cord and Plug drivers. Order separately for Hard Wire or 3rd Party Drivers



FLXible Neon 3D Left Side Feed

- __FN3D (color)K-24V-C90-LS-5M(16.4')
- __FN3D (color)K-24V-C90-LS-4M(13.1')
- __FN3D (color)K-24V-C90-LS-3M(9.8')
- __FN3D (color)K-24V-C90-LS-2M(6.6')
- __FN3D (color)K-24V-C90-LS-1M(3.3')



Control Interface (0-10V)

- __FDD-L20 **
- Max. 200W (100W/CH, 2CH)



LED Drivers

- __FLC30-24V/XL (30W) *
- __FLC75-24V/XL (75W) *
- With distributor and power cord 1800mm (6')



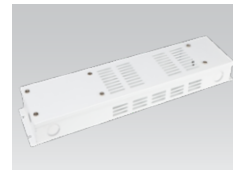
FLXible Neon 3D Bottom Feed

- __FN3D (color)K-24V-C90-BS-5M(16.4')
- __FN3D (color)K-24V-C90-BS-4M(13.1')
- __FN3D (color)K-24V-C90-BS-3M(9.8')
- __FN3D (color)K-24V-C90-BS-2M(6.6')
- __FN3D (color)K-24V-C90-BS-1M(3.3')



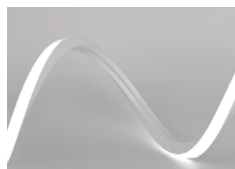
Control Interface (DALI)

- __FDD-L1DA
- Max. 200W (100W/CH, 1CH)



Driver Junction Box

- __MHWB-FLE



FLXible Neon 3D-Straight Feed Tunable White

- __FN3D SC-24V-C90-5M(16.4')
- __FN3D SC--24V-C90-4M(13.1')
- __FN3D SC--24V-C90-3M(9.8')
- __FN3D SC--24V-C90-2M(6.6')
- __FN3D SC-24V-C90-1M(3.3')



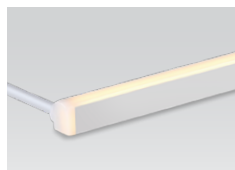
Control Interface (0-10V, DMX512)

- __FDA-L2MO
- Max. 200W (100W/CH, 2CH)
- __FDA-L5M
- Max. 200W (50W/CH, 5CH)



Hard Wire Driver

- __XLD200-224V-FCL-DIM (0-10V)
- __XLD75-124V-FC * (90V to 300V)



FLXible Neon 3D-Left Side Feed Tunable White

- __FN3D SC--24V-C90-LS-5M(16.4')
- __FN3D SC--24V-C90-LS-4M(13.1')
- __FN3D SC--24V-C90-LS-3M(9.8')
- __FN3D SC--24V-C90-LS-2M(6.6')
- __FN3D SC--24V-C90-LS-1M(3.3')



Control Interface (Zigbee)

- __FDD-L2Z



Hard Wire Driver

- __FLE60-24V-L10-DIM (Linear)
- __FLE90-24V-L10-DIM (Linear)



FLXible Neon 3D-Bottom Feed Tunable White

- __FN3D SC--24V-C90-BS-5M(16.4')
- __FN3D SC--24V-C90-BS-4M(13.1')
- __FN3D SC--24V-C90-BS-3M(9.8')
- __FN3D SC--24V-C90-BS-2M(6.6')
- __FN3D SC--24V-C90-BS-1M(3.3')

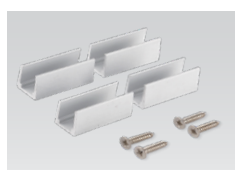


Wireless Control (Zigbee Switch)

- __FSM-Z1

A larger selection of drivers are available including remote and hard wire drivers. Please consult factory.

- * FLC30, FLC75 and XLD75 require the FDC-L10 for 0-10V dimming
- ** FLC30, FLC75 and XLD75 require the FDD-L20 for Dim to Warm/Tunable White



FN3D Mounting Brackets

- __FN3D-BRACKET1 (1set = 4pcs)



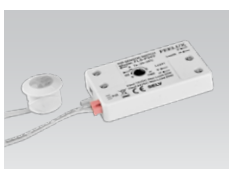
Door and motion sensor

- __FLS-M24V



FN3D Angle Bracket

- __FN3D-BRACKET2 (1set = 4pcs)



Occupancy sensor

- __FLS-P24V



FN3D Extrusion Line

- __FN3D-EXL (3.3')



FN3D Flexible Extrusion Line

- __FN3D-EXL-FLEX (3.3')



FN3D End Cap

- __FN3D-END CAP

Individual Packaging includes 1 reel, bracket(4 pcs), screw(4 pcs), and end cap(1 pc)