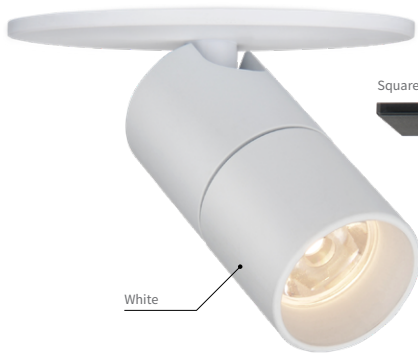


DATE	PROJECT	LOCATION	TYPE
------	---------	----------	------



Round Plate



White

Square Plate



Black



Surface mounting option with DVP surface mounting ring (DVP-MR)

PRODUCT FEATURES

- Use with constant voltage DC 24V driver
- Mini spotlight with various beam options 28°, 40°, 50°
- Available in black and white
- Control with 0-10V, DALI, DMX, Zigbee
- Surface mount option
- Link up to 10 units
- Perfect for Millwork/Ceiling Applications
- Round and Square plate available

PRODUCT SPECIFICATIONS

Power Input	24V DC Constant Voltage
Color Rendering Index	CRI >90
Available CCTs	2700K, 3000K, 3500K, 4000K
Energy efficiency	97.7 lm/W
Operating Temperature Ranges	32-113°F (0-45°C)
Control	0-10V, DALI, DMX, Zigbee
Finish	Black, White (Special Order Option-Gold, Silver)
Beam Angle	28°, 40°, 50°
Lamp life	50,000hr / 70%
Warranty	5 year Warranty

SPECIFICATION

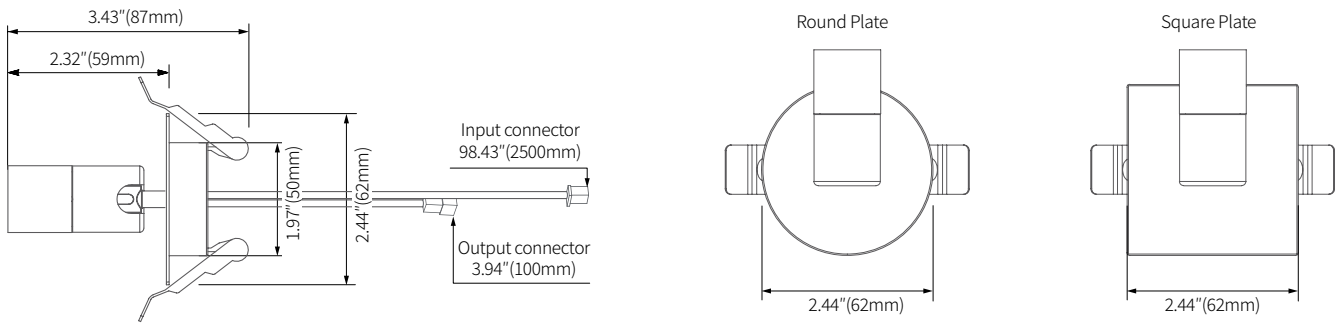
Performance data shown below for 4000K CCT. Refer to individual luminaire IES files for other CCT options.

Model Name	Power Input	Lamp Power	Luminous Flux	Luminous Efficacy	Color Rendering Index	Color Temperature	Beam Angle	Operating Temperature
DVP3 (color)K-24V-28	DC 24V	2.6 W	253.1 lm	97.7 lm/W	CRI > 90	2700K 3000K 3500K 4000K	28° 40° 50°	0-45°C (32-113°F)

SPECIFICATION GUIDE

MODEL	COLOR	BEAM ANGLE	FINISH	TYPE	MOUNTING	DRIVER	CONTROLS	VOLTAGE
DVP 3	27K -2700K 30K -3000K 35K -3500K 40K -4000K	28° 40° 50°	BK - Black WT - White SV - Silver (Special Order Option) GD - Gold (Special Order Option)	RP - Round Plate SP - Square Plate	RM - Recessed Mount SM - Surface Mount	CP - Cable/Plug HW - Hard Wire TD - 3rd Party Drivers Consult Factory	NDM - Non-Dim 0-10V DALI - DALI Interface DMX - DMX Interface	120V 230V 277V

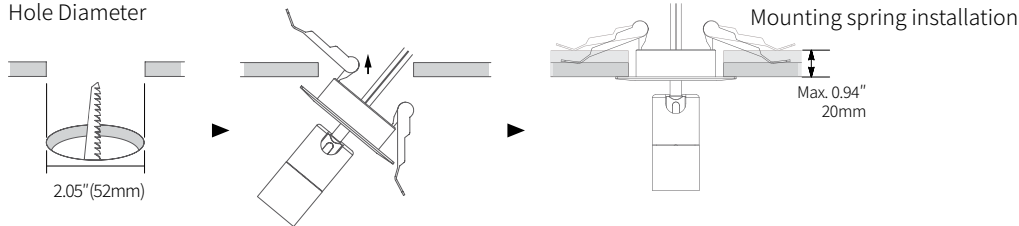
DIMENSION



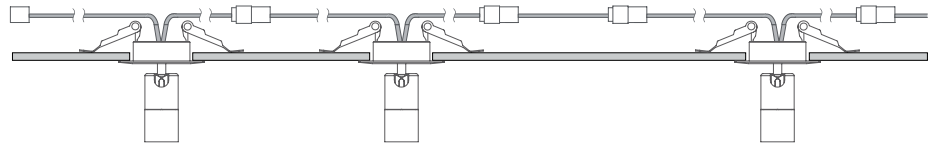
INSTALLATION

Recessed mounting

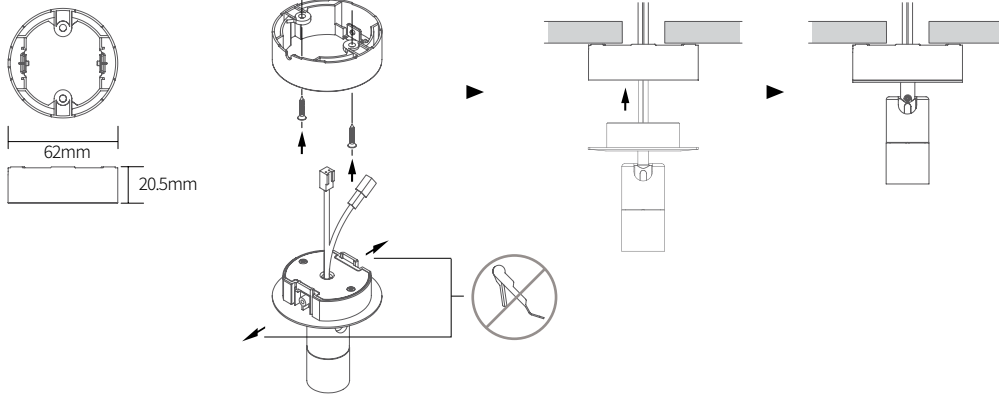
Hole Diameter



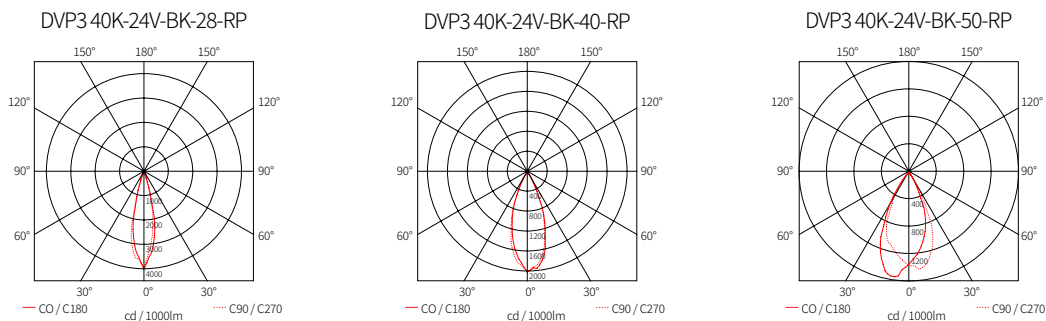
★ Linkabel between FLX Spot DVP and FLX Spot DVP (Max. 10 units connectable)



Surface mounting (Round plate)



BEAM SPREADS



COMPONENTS



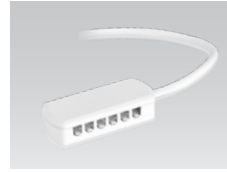
FLX Spot DVP-Round Plate

- __DVP3 (color)K-24V-BK-28-RP
- __DVP3 (color)K-24V-WT-28-RP
- 28°, 40°, 50° angles are available
- Other finishes available as special order



Dimming Interface (0-10V)

- __FDC-L10 *
- Max. 100W (100W/CH, 1CH)



12 Port Hub

- __D12P-HUB
- Included with Cord and Plug drivers. Order separately for Hard Wire or 3rd Party Drivers



FLX Spot DVP-Square Plate

- __DVP3 (color)K-24V-BK-28-SP
- __DVP3 (color)K-24V-WT-28-SP
- 28°, 40°, 50° angles are available
- Other finishes available as special order



Control Interface (0-10V)

- __FDD-L20
- Max. 200W (100W/CH, 2CH)



LED Drivers

- __FLC30-24V/XL (30W) *
- __FLC75-24V/XL (75W) *
- With distributor and power cord 1800mm (6')



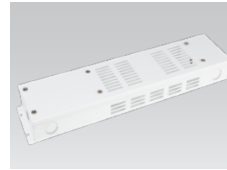
DVP-HOOD

- __DVP3-HOOD-BK-28
- __DVP3-HOOD-BK-40
- __DVP3-HOOD-BK-50
- __DVP3-HOOD-WT-28
- __DVP3-HOOD-WT-40
- __DVP3-HOOD-WT-50
- Hood with lens for replacement
- Other finishes available as special order



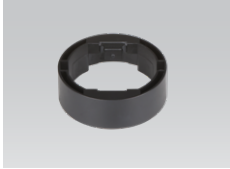
Control Interface (DALI)

- __FDD-L1DA
- Max. 200W (100W/CH, 1CH)



Driver Junction Box

- __MHWB-FLE



DVP surface mounting ring

- __DVP-MR-BK
- __DVP-MR-WT
- Other finishes available as special order



Control Interface (0-10V, DMX512)

- __FDA-L2MO
- Max. 200W (100W/CH, 2CH)
- __FDA-L5M
- Max. 200W (50W/CH, 5CH)



Hard Wire Driver

- __XLD200-224V-FCL-DIM (0-10V)
- __XLD75-124V-FC * (90V to 300V)



Control Interface (Zigbee)

- __FDD-L2Z



Hard Wire Driver

- __FLE60-24V-L10-DIM (Linear)
- __FLE90-24V-L10-DIM (Linear)



Wireless Control (Zigbee Switch)

- __FSM-Z1

A larger selection of drivers are available including remote and hard wire drivers. Please consult factory.



Door and motion sensor

- __FLS-M24V

* FLC30, FLC75 and XLD75 require the FDC-L10 for 0-10V dimming



Occupancy sensor

- __FLS-P24V