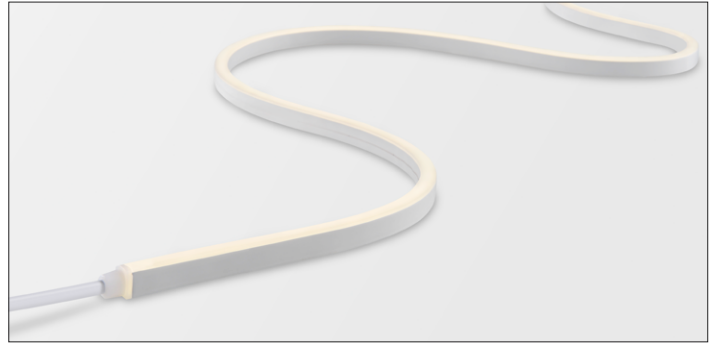


DATE	PROJECT	LOCATION	TYPE
------	---------	----------	------



PRODUCT FEATURES

- Seamless Spot Free Illumination
- UV-resistant Silicon material
- Close Pitch LEDs
- Side/Horizontal Bend
- Control with FDD-L20, 0-10V
- Indoor and Outdoor Application
- Tunable color range 22K-40K

PRODUCT SPECIFICATIONS

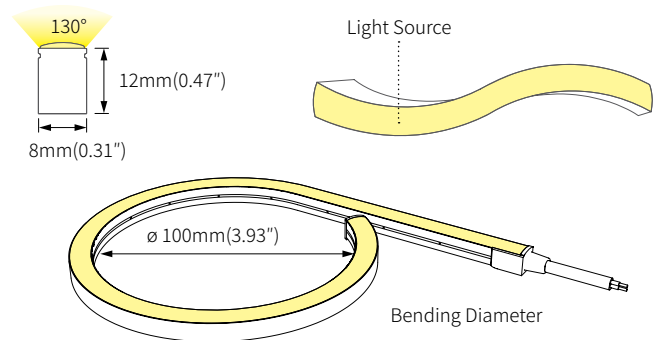
Lamp Power	17.9 W/M (5.4 W/ft)
Power Input	24V DC Constant Voltage
Color Rendering Index	CRI >90
Available CCTs	SC(2200K-4000K)
Operating Temperature Ranges	-4°F to 122°F (-20°C to 50°C)
Control	FDD-L20, 0-10V
Material	Silicone
Beam Angle	130°
Maximum Length	5,000mm (16.4')
Minimum Length	50mm (1.97")
Bend Diameter	100mm (3.93")
Lamp life	50,000hr / 70%
Warranty	5 year Warranty
IP Rate	IP67 with Factory Termination
	IP65 with Field Termination

SPECIFICATIONS TABLE



Model Name	Color Temperature	Lamp Power	Luminous Flux	Lumen/W
FN1 SC-24V-C90	2200K-4000K	17.9 W/M (5.4 W/ft)	178 lm/ft	33 lm/W

PHYSICAL SPECIFICATIONS



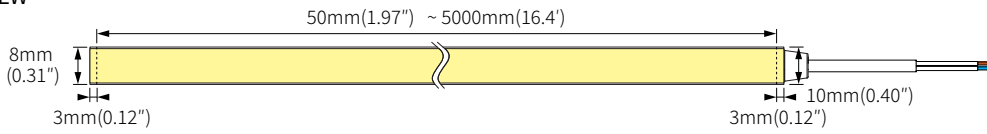
SPECIFICATION GUIDE

NOT TO BE USED FOR ORDERING. The Specification Guide is intended solely to ensure that all options are considered.

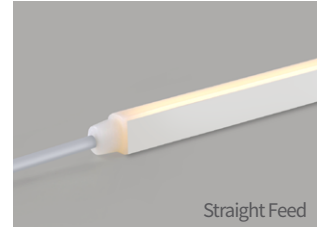
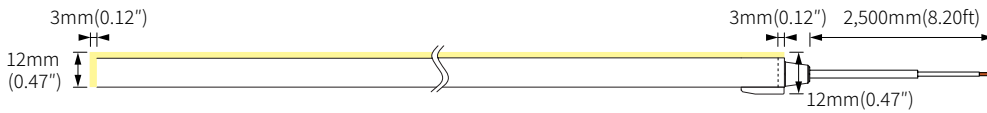
MODEL	COLOR	FEED TYPE	MOUNTING	EXTRUSION	DRIVER	CONTROLS	VOLTAGE
FN1		C90				FDD-L20	
FN1	SC-22K-40K	STD - Straight Feed LS - Left Side Feed	STD - Flat Brackets BK2 - 15°/40° Brackets	EXL- 4' Extrusion EXL-FLEX - 3.3' Flexible Extrusion	CP - Cable/Plug HW - Hard Wire TD - 3rd Party Drivers Consult Factory	0-10V	120V 230V 277V

DIMENSIONS

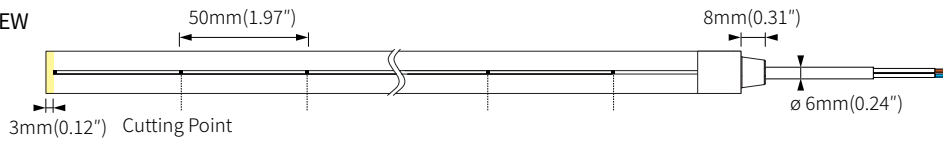
TOP VIEW



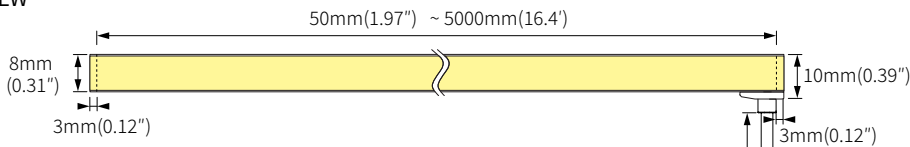
SIDE VIEW



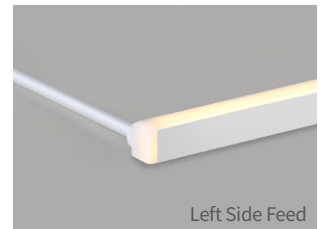
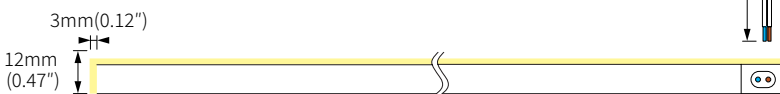
BOTTOM VIEW



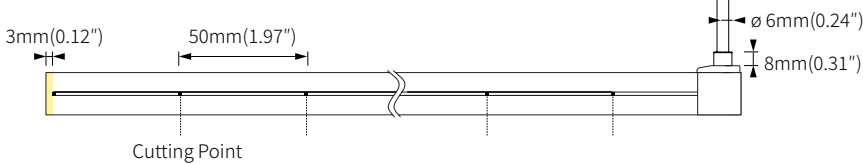
TOP VIEW



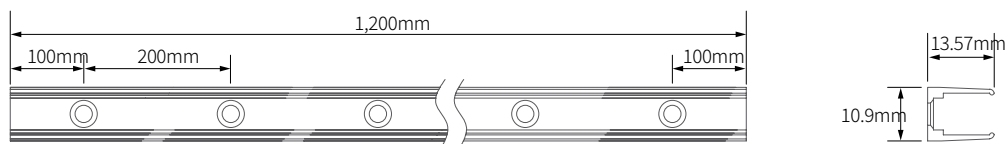
SIDE VIEW



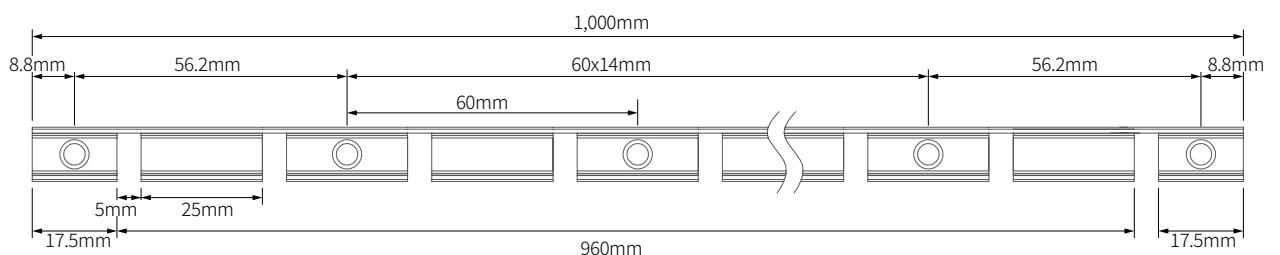
BOTTOM VIEW



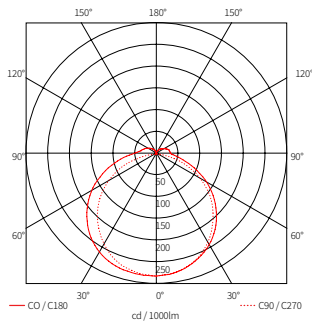
FN1-EXL



FN1-EXL-FLEX

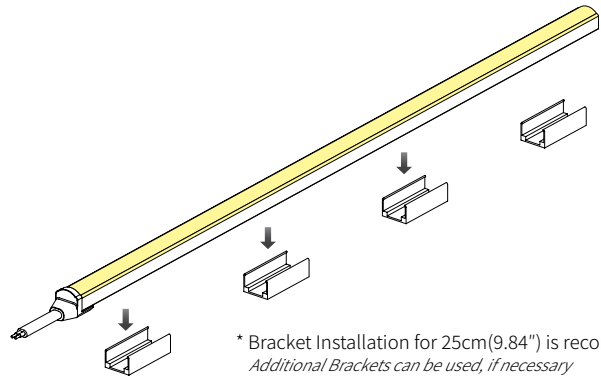


BEAM SPREADS



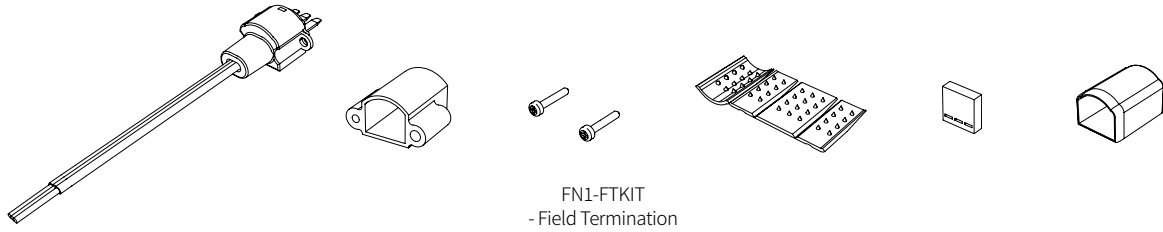
FN1 SC-24V-1M
33 lm/W
592 lm

INSTALLATION - Bracket

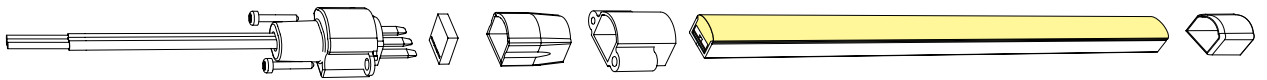


INSTALLATION - Field Termination (IP65)

* Components



* Expanded View



COMPONENTS



FLXible Neon 1-Straight Feed

- __FN1 SC-24V-C90-5M(16.4')
- __FN1 SC-24V-C90-4M(13.1')
- __FN1 SC-24V-C90-3M(9.8')
- __FN1 SC-24V-C90-2M(6.6')
- __FN1 SC-24V-C90-1M(3.3')



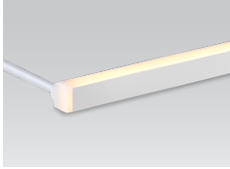
Control Interface required

- __FDD-L20
- Max. 200W (100W/CH, 2CH)



12 Port Hub

- __D12P-HUB
- Included with Cord and Plug drivers. Order separately for Hard Wire or 3rd Party Drivers



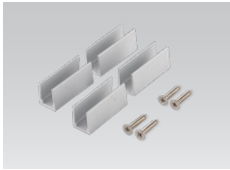
FLXible Neon 1-Left Side Feed

- __FN1 SC-24V-C90-LS-5M(16.4')
- __FN1 SC-24V-C90-LS-4M(13.1')
- __FN1 SC-24V-C90-LS-3M(9.8')
- __FN1 SC-24V-C90-LS-2M(6.6')
- __FN1 SC-24V-C90-LS-1M(3.3')



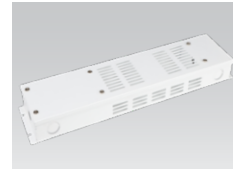
LED Drivers

- __FLC30-24V/XL (30W)
- __FLC75-24V/XL (75W)
- With distributor and power cord 1800mm (6')



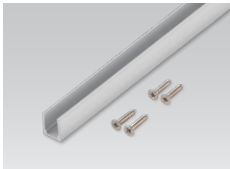
Mounting Brackets

- __FN1-BRACKET1



Driver Junction Box

- __MHWB-FLE



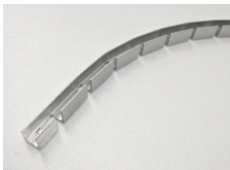
FN1 Extrusion Line

- __FN1-EXL (4')



Hard Wire Driver

- __XLD200-224V-FCL-DIM (0-10V)
- __XLD75-124V-FC (90V to 300V)



FN2 Flexible Extrusion Line

- __FN1-EXL-FLEX (3.28')



Hard Wire Driver

- __FLE60-24V-L10-DIM (Linear)
- __FLE90-24V-L10-DIM (Linear)



Expanding Stick

- __FN-EPS

A larger selection of drivers are available including remote and hard wire drivers. Please consult factory.



Field Termination

- __FN1-FTKIT-DUAL

FLC30, FLC75 and XLD75 require the FDD-L20 for Dim to Warm/Tunable White



Angled Brackets

- Angled 15°/ 40°
- __FN1-BRACKET2
- Optional

Individual Packaging includes 1 reel, bracket(4 pcs), screw(4 pcs), and end cap(1 pc)